

Théâtre de l'Entrouvert

ANYWHERE

Technical sheet

10/11/17

Staff on tour :

- 2 Artists - 1 General Manager - 1 Stage Manager
- Duration of the show: 50mn
- Audience: Not more 160 persons

Changing Rooms :

- 2 Showers and hand towels.
- Washing Machine and tumble dryer.
- One iron and table to iron.
- One hair dryer.

Miscellaneous :

- We need 2 technicians to clean the stage before and after every representation (water and white paint on the scenography).
- We need a space of minimum 10m² with a water supply to make the Ice Puppet and to put 2 freezers (1 freezer 90cm/150cm and 1 freezer 60cm/110cm). In this space we need 2 tables. This place must be cold (not more than 20°C).
- Carefull ! This space may get dirty with water and white pigment. You can put some plastic cover to protect your floor. This scene shop must be nearest the stage as possible.
- Carefull ! our rigging material is really precious. One member of our staff must be here for each manipulation.
- Thank you for previous electricity plugs adaptators for all our material. In France our electricity is (240V 50HZ)

Stage :

- **TOTAL BLACK on stage and in the room ! Carefull emergency exit light must be covered with a blue filter.**
- This show requires close proximity between the audience and the stage
- Carefull we use ice, paint, smoke and dough fire If you have a wood floor, think to protect your floor from water.
- **You must inform us if your floor is not level !**
- The public must enter into the room just 10 minutes before the beginning of the performance

The stage :

- Minimum Opening in the frame: 6 meters (9 meters between walls)
- Minimum Depth: 7 meters.
- Minimum Height: 3,5 meters under grid
- Maximum Height to hang the puppet control : 5 meters under grid (it is possible to suspend a lower bar)

Théâtre de l'Entrouvert

ANYWHERE

Technical sheet

10/11/17

Configuration :

- Black Leg (see the plan)
- Hard teaser.
- Black marley on the totality of the acting area.
- Blacks walls

We need :

- 4 X 20Kg of weight.
- 1 standard water supply type on the stage. Tap without push button.
- 1 vacuum cleaner for water, and mops, broom-raquettes.
- 2 stepladders with 5 steps.
- 1 A-frame extension ladder.

Sound :

(computer + sound card, mic DPA4061 belonging from the compagny)

- 7 independant points of diffusion and two subwoofers, good quality (1 Stereo plan back of the gauze (aux 1&2), 1 stereo plan clust at the middle of the stage (aux 5&6), one stereo plan front of house(aux 3&4) with separates sub (aux 8), one mono plan back of the spectators (aux 7).
- A professional mixer with 9 in /8 outs minimum. Comp and EQ for the microphone.
- 1 wireless systeme UHF type « Pocket ». Sennheiser system preferred.
- We need the adaptator for the mic DPA4061.

Light :

(computer + DMX card belonging from the compagny)

- Lighting room on DMX.
- 36 Dimmers 2KW.
- 2 mike stand 1m/1,60m.
- 6 floor stands for spots.
- 7 Profiles 614SX + 1 iris.
- 4 Profiles 613SX + 4 Gobos Holders.
- 5 PC 1KW.

Equipment to be supplied in the case of transportation of the scenery by plane

- A complete tools box, we need to built some small things (tinkering).
- Perishables : blake tape, gaffa, nylon rope (30 meters, diameter 4 mm²), garbage bag, plastic cup.

Scene shop :

- 2 Chests Freezers:
1 freezer : 90cm/150cm and 1 freezer : 60cm/110cm (Minimum size).
- A plywood board (80cm/130cm/2cm).

Théâtre de l'Entrouvert

ANYWHERE

Technical sheet

10/11/17

- 2 buckets only for puppet ice.
- 1 little fan heater.
- 2 jerrican (20L) with robinets.
- Small patches of plywood for leveling.
- 1 bottle (1L), 1 sponge, paper towel to clean.
- 1 domestic shovel and 1 brush.

Light and sound

- Sound card (open USB, 8 outputs minimum).

Scenography

- 50 dark gray slates tiles (30cm/20cm).
- 50 Kg fine Salt.
- 1 black gauze (width: 6 meters / The height of your rigging).

Fluid

- 50 meters of Watering hoses.
- 1 Trash of 50 liters.
- White gouache painting (1 liter for one representation).
- 2 fogs machines whith heavy liquid.
- dough for fire.

Planning and staff:

- Set Up : 12H the day before the show.
- Focusing and sound + run through : 6H the day of the show.
- Break Out : 4H.

- The day of the show : we need the stage from 9 AM.
- Disassembling after each show (clean and construction of the ice puppet) : 2H.

Théâtre de l'Entrouvert

ANYWHERE

Technical sheet

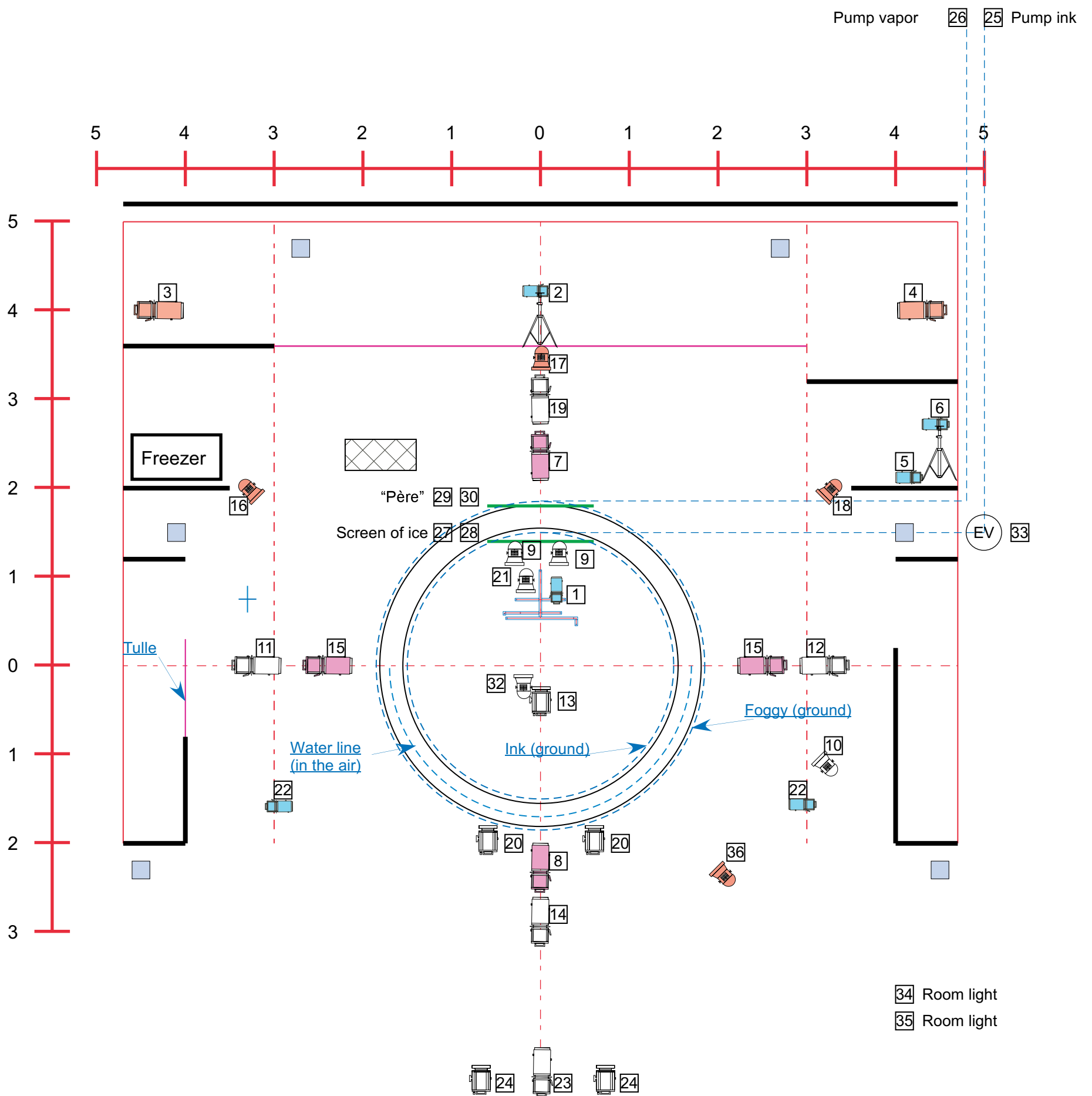
10/11/17

	1st Day	2nd Day
Duty Morning 8H / 12h	<u>Assembly sets + Lights</u> 1 Polyvalent technician, 1 Light technician, 1 Stage technician,	<u>Focusing and sound</u> 1 Polyvalent technician
Duty Afternoon 13h30h / 17H30h	<u>Assembly Sets + Lights + Implanting sound:</u> 1 Polyvalent technician for sound, 1 Light technician, 1 Stage technician, 1	<u>Run through</u> 1 Polyvalent technician
Duty Evening 19h / 23h	<u>Regulations Lights + Check sound</u> 1 Polyvalent technician for sound, 1 Light technician, 1 Stage technician,	<u>SHOW :</u> 1 Polyvalent technician
Duty Night 23h / 01h		<u>Disassembling:</u> 4 Polyvalents technicians

N.B. : if in doubt do not hesitate to contact me (numero portable)

Images of the show

- The teaser : <https://vimeo.com/158937226>
- The website : www.lentrouvert.com



- 5x ETC 26°
- 4x ETC Zoom + Gobos Holders
- 5x PC 1 Kw
- 2x ETC 26° (ground)
- 6x Mini découpe 90W (Supplied by the company)
- 5x F1 (Supplied by the company)
- 4x Mickey (Supplied by the company)
- 2x mike stand (for the mini découpes)
- 2x floor standsl
- 1x Iris for ETC 26°
- HP

- Piping fluids
- Tulle
- Legs
- Machinery

Plan version of 25/01/2017
 Scale: 1/50 print A3
 cyril.monteil.cm@gmail.com
 GSM: +33 6 07 10 38 70

Height 5m