

Théâtre de l'Entrouvert

ANYWHERE

Technical sheet

10/06/17

Staff on tour :

- 2 Artists - 1 General Manager - 1 Stage Manager
- Duration of the show: 50mn
- Audience: Not more 160 persons

Changing Rooms :

- 2 Showers and hand towels.
- Washing Machine and tumble-dryer.

Miscellaneous :

- We need 2 technicians to clean the stage before and after every representation (water and white paint on the scenography).
- We need a space of minimum 10m² with a water supply to make the Ice Puppet and to put 2 freezers (1 freezer 90cm/150cm and 1 freezer 60cm/110cm). In this space we need 2 tables.
- Carefull ! This space may get dirty with water and white pigment. You can put some plastic cover to protect your floor.

Stage :

- **TOTAL BLACK on stage and in the room ! Carefull emergency exit light must be covered with a blue gel**
- This show requires close proximity between the audience and the stage
- Carefull we use ice, paint, smoke and dough fire If you have a wood floor, think to protect your floor from water.
- **You must inform us if your floor is not level !**
- The public must enter into the room just 10 minutes before the beginning of the performance

The stage :

- Minimum Opening in the frame: 6 meters (9 meters between walls)
- Minimum Depth: 7 meters.
- Minimum Height: 3,5 meters under grid
- Maximum Height to hang the puppet controll : 5 meters under grid (it is possible to suspend a lower bar)

Théâtre de l'Entrouvert

ANYWHERE

Technical sheet

10/06/17

Configuration :

- Black Leg (see the plan)
- Hard teaser.
- Black marley on the totality of the acting area. They can be used
- Blacks walls

We need :

- 2 X 40Kg of weight
- 1 standard water supply type in a room near the stage. Tap without push button
- 1 vacuum cleaner for water.
- 2 stools with 5 steps.

Sound :

(computer + sound card, capsule DPA4061 belonging from the compagny)

- 6 independent points of diffusion, good quality (1 Stereo plan Ground in the Upstage / 1 Stereo plan Down stage / 1 Stereo plan Side behind the spectators).
- 1 Micro UHF type « Pocket-cravatte ». Sennheiser system preferred.
- We need the adaptator for the capsule DPA4061

Light :

(computer + DMX card belonging from the compagny)

- Lighting room on DMX.
- 36 Dimmers 2KW.
- 2 mike stand 1m/1,60m.
- 4 floor stands for spots.
- 7 Profiles 614SX + 1 iris
- 4 Profiles 613SX + 4 Gobos Holders
- 5 PC 1KW.

Equipment to be supplied in the case of transportation of the scenery by plane

- 50 dark gray slates Tiles (30cm/20cm)
- 2 Chests Freezers:
1 freezer : 90cm/150cm and 1 freezer : 60cm/110cm (Minimum size)
- 50 KG Fine Salt
- White gouache painting (3 liters for one representation)
- 50 meters of Watering hoses
- 1 Trash of 50 liters
- A plywood board (80cm/130cm/1cm)
- Small patches of plywood for leveling.

Théâtre de l'Entrouvert

ANYWHERE

Technical sheet

10/06/17

Planning and staff:

- Set Up : 12H the day before the show
- Focusing and sound+ run through : 6H the day of the show
- Break Out : 4H

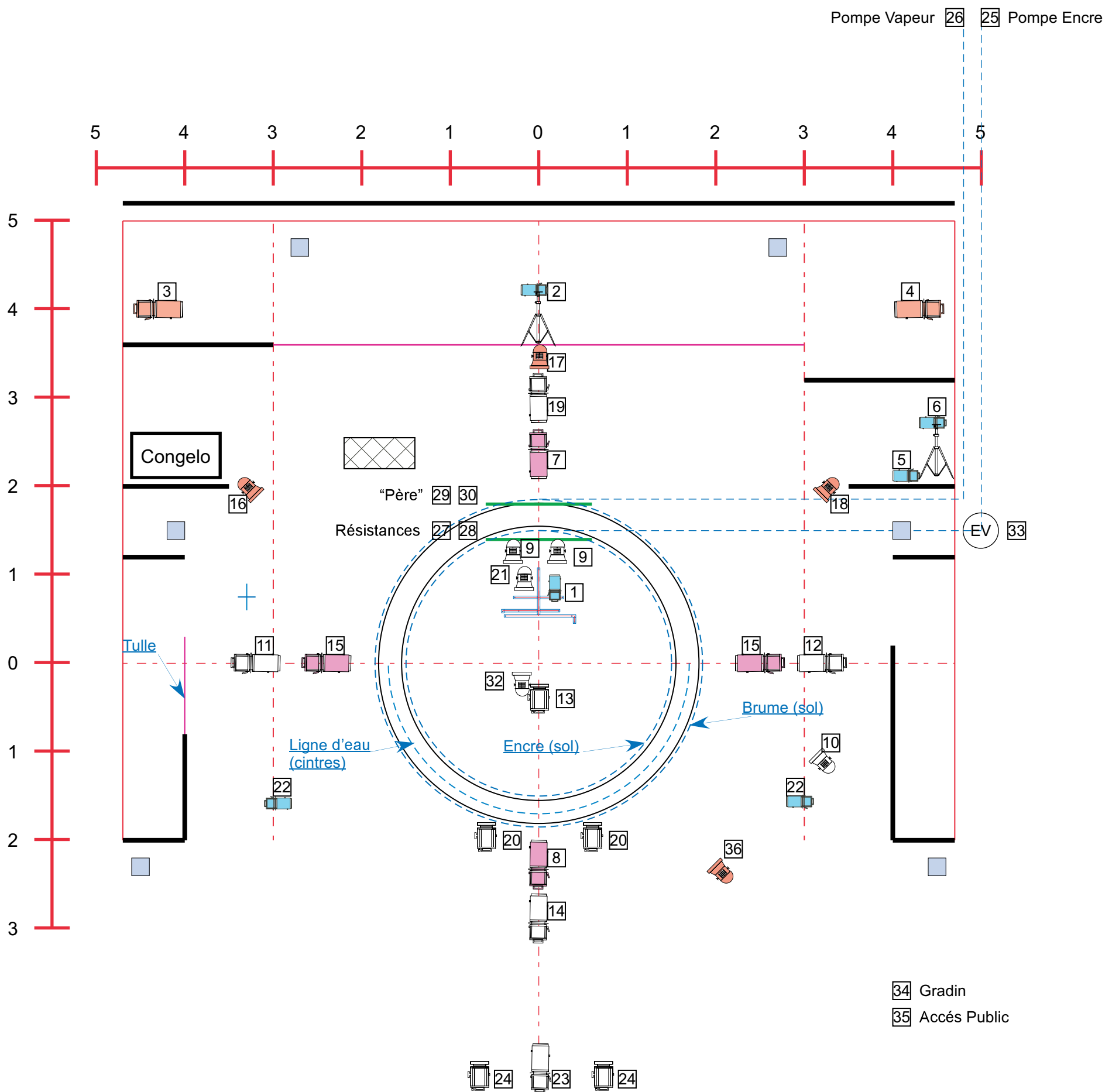
- The day of the show : we need the stage from 9 AM
- Disassembling after each show (clean and construction of the ice puppet) : 2H

	1st Day	2nd Day
Duty Morning 8H / 12h	<u>Assembly sets + Lights</u> 1 Polyvalent technician, 1 Light technician, 1 Stage technician,	<u>Focusing and sound</u> 1 Polyvalent technician
Duty Afternoon 13h30h / 17H30h	<u>Assembly Sets + Lights + Implanting sound:</u> 1 Polyvalent technician for sound, 1 Light technician, 1 Stage technician, 1	<u>Run through</u> 1 Polyvalent technician
Duty Evening 19h / 23h	<u>Regulations Lights + Check sound</u> 1 Polyvalent technician for sound, 1 Light technician, 1 Stage technician,	<u>SHOW :</u> 1 Polyvalent technician
Duty Night 23h / 01h		<u>Disassembling:</u> 4 Polyvalents technicians

N.B. : if in doubt do not hesitate to contact me (numero portable)

Images of the show

- The teaser : <https://vimeo.com/158937226>
- The website : www.lentrouvert.com



- 5x Déc 614 S
- 4x Déc 613 SX + porte gobos
- 5x PC 1 Kw
- 2x Déc 614 S (sol)
- 6x Mini découpe 90W (fournis par la Cie)
- 5x F1 (fournis par la Cie)
- 4x Mickey (fournis par la Cie)
- 2x Pied Micro droit (pour les mini découpes)
- 2x platine de sol
- 1x Iris pour 614
- HP

- Tuyauterie fluides (fournis par la Cie)
- Tulles (fournis par la Cie)
- Pendrillons
- Machineries (fournis par la Cie)

Plan version du 25/01/2017
 Echelle: 1/50 print A3
 cyril.monteil.cm@gmail.com
 GSM: +33 6 07 10 38 70

Hauteur 5m