

LES VAGUES

Director Élise Vigneron

Creation 2023 | Duration : 1H | Capacity : maximum 500

Technical requirements

The elements described below are for informational purposes only. Their content should be discussed between the technical directors of both parties.

We do not accept latecomers

1. STAGE

Height under pipe : 5,8 m (an extra day of set-up is required if the height is not respected)

Height for which we need to find rigid bracing or guying option

Stage without slope, we use 1 000l of water on stage

Stage size :

Wall to wall minimum : 12m (contact us in case of lower tray dimensions)

Depth minimum : 12 m (contact us in case of lower tray dimensions)

2. STAGE SET

The company's technical equipment will be delivered by a **50m3 vehicle** with tailgate to the performance venue on D-2 in the morning or afternoon, depending on the number of performances. (Cf schedule)

Reloading will be carried out on D +1 for a single performance, and on the evening of the last performance for several performances.

Stage set description

- 1 pool 8.9m X 5.85m depth. 7cm height. Water weight : 1 To on 52m2.
- 5 rails for 5 ice puppets to be hang to your pipe/truss at 5,80m height. The rails will be suspended by aluminum collars (provided) at 40 points (point load ranging from 70 to 40 kg per point depending on the hanging possibility) - Effective weight of the installation: 550 kilos + guying at 4 points, for immobilization of the whole. In the case of counterbalanced poles, provide for blocking of the carriages from below.
- A refrigerated display case 215 cm high (attention access) x 190 x 72cm on wheels.
- Provide for the bracing of the pipes used in order to constrain them on up/down and left/right movements.
- A distant pipe will be used for the counterweights of the puppets (total weight approximately 35 kilos) this pipe must be located 2m from the pool. Depending on the location of your pipe. This pole will also be guyed with that of the rails
- 2 water tons containing 500 liters of water each.
- 1 pull-and-drop system for an ice globe

To be provided :

- 500 kilos of ballast to be provided by the theater, to be divided into 5 x 40 kilos (black) + 200 kilos placed on the control station + 3 x 40 kg
- Provide 2 tubes of 6m minimum to connect the rail pipes + 2 tubes of 3m minimum to connect the counterweight pipe to the rails + 4 tubes of 1m for the pull-and-release system + 24 orthogonal collars
- 2 platforms (+ distribution plate if necessary) to raise the 2 water tons
- 7x10 polyane under dance floor in case of several performances, to avoid condensation on the floor of the stage
- Black dance floor
- Black curtain + borders (details will be given on a suitable plan)
- 1 water pipe to fill the 2 tonnes of water
- Evacuation of 1000 liters of water before dismantling or every 3 days in the case of series (pumps supplied)
- 1 wet vacuum

3. ICE

To be provided

Minimum 45m2 indoor space near the playing area for ice work with :

- **Cold water point** with bucket filling facility
- **A drainage point** (sink, washbasin, nozzle)
- **7 x 230v/16A power supplies** for freezers and fountain (a tetra-32 box may be required)
- **5 tables** 80x200cm for demolding ice puppets
- Garbage cans, chairs and lighting adapted to workshop work

Provided by the company :

- 1 x freezer coffre sliding glass, reference : GAMMA 200 N (l 2052 x d 967 x h 750 x 121 kg x power 670 W)
- 5x sliding coffres freezers, reference : GAMMA 150 N (l1552 x d 967 x h 750 x 91kg x power 570 W)
- 1 water cooler on wheels (W 125 x D 62 x H 125 cm. Power 750W)
- 1 toolbox on wheels.
- 1 water vacuum cleaner

Once connected, freezers must never be moved

4. SOUND

See technical rider in appendix

The booth must be located in the audience (microphony)

Contact: Camille Frachet : +336 81 62 99 27 ou Alice Le Moigne +336 30 07 35 96

To be provided**Booth**

- Digital mixing desk, computer connection in DVS or ADAT with Focusrite Scarlett 18i20 3rd Gen company card.
- Provide a SM58 mic in booth and a second handheld HF mic or wired SM58 for afternoon rehearsal (director).
- Provision 2 wireless intercom for stage managers on stage and 2 wired connections for light manager and sound manager.
- Provide 6 pocket HF links - the company provides the 6 DPA 6061 microdot capsules: provide the adapters depending on the venue system.

Public address

- A public address system adapted to the venue + Sub and not bass reinforcements. For amplified voice: provide a central cluster speaker and if necessary front file depending of the venue, see technical preparation on plan with the tour managers.
- Upstage: 2 x 15-inch speakers type L-Acoustics, d&b, Amadeus - provide moving heads, mounting height: bottom of speaker at 3m50.
- Audience room: 4 x 8 or 12 inch speakers type L-Acoustics, d&b, Amadeus. Free-standing or hanging. Height to be defined together on plan depending on the venue.

Provided by the company

- a speaker for the handling station (upstage): please provide a XLR and a power supply.
- Computer + Focusrite Scarlett 18i20 sound card + ADAT cables
- 6 capsules DPA6061
- one 5-inch speaker

5. LIGHT

Contact: Tatiana Carret: +336 79 50 91 34

General remarks :

- Room lighting should be dimmable from the organ stop, and not drool on the set
- Pre-assembly is required: projectors wired, tested and gelatinized
- The list of equipment below is subject to change depending on the proposed adaptation.
- Each spotlight will be equipped with a hook, a safety sling and a filter holder.

To be provided :

- a control board Congo/Cobalt/Eos type.
- 86 dimmers 2kW (room light not included)
- 2 DMX univers

- 8 profile 714SX or equivalent
- 2 profile 713SX or equivalent
- 14 profile 613SX or equivalent
- 3 profile 614SX or equivalent
- 6 cyc light 1000W
- 40 PAR can 64 (28 CP62 et 12 CP60)
- 1 fog machine
- 2 light stand with cross bar or 2 ladder (height lens 1,2m)
- 1 strob light Atomic 300

Provided by the company :

- 1 F1
- 5 F1 LED RGBW
- 5 reels
- 6 receivers / 1 transmitter HF DMX

Filter (Formats will be specified on the adaptation plan) :
Lee filter: L500 – L501 – L503 - L249 – L134 / Rosco : #119

7. PLANNING / STAFF

Working on the ice requires precise timing. The schedule varies according to the number of performances.

General schedule

D -2: 10 am - 8pm : pre-hang + Ice workshop set-up

D - 1 : 9am - 11pm: Set up

D : 9 am - pool and puppet Installation - adjustment - rehearsal - SHOW - cleaning (1h30/2h)

Complete load-out and get out are estimated to 4/5 hours

After each show, sqtrike begins by emptying the pool, with the host's technical team taking part, including lighting and sound, or 2 more machinists.

We need one stage hand during the show for some manipulations

6. DRESSING ROOM

Dressing rooms for 5 performers equipped with a well-lit mirror, washbasin, towels, soap, tables and chairs. Sanitary facilities nearby.

Catering for the company: bottles of mineral water or fountain water (still), coffee, tea, fruit juice, small cakes, fresh fruit, dried fruit, chocolate, ... Catering should be ready on the morning of D-1.

7. TOURNÉES/INTERPRÈTES

Touring team (12 people): 5 artists, 3 stage managers, 2 ice managers, 1 director, 1 production manager

The diffuseur must ensure the presence of an interpreter when the host technical team speaks neither French nor English.

8. CONTACTS

Marion PIRY
Stage manager

+33(0)6 84 33 05 21

marion.piry@gmail.com

Lucie JULIEN
Producer

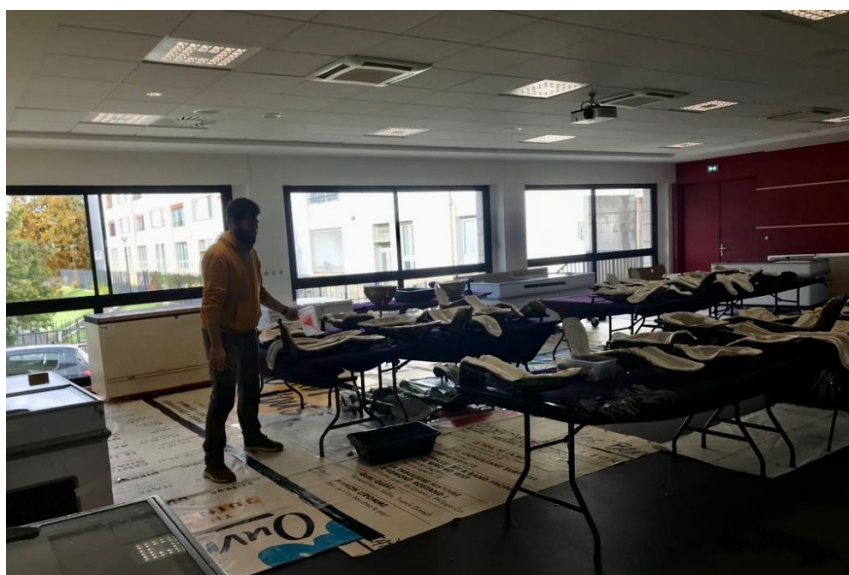
+33(0)6 28 20 84 84

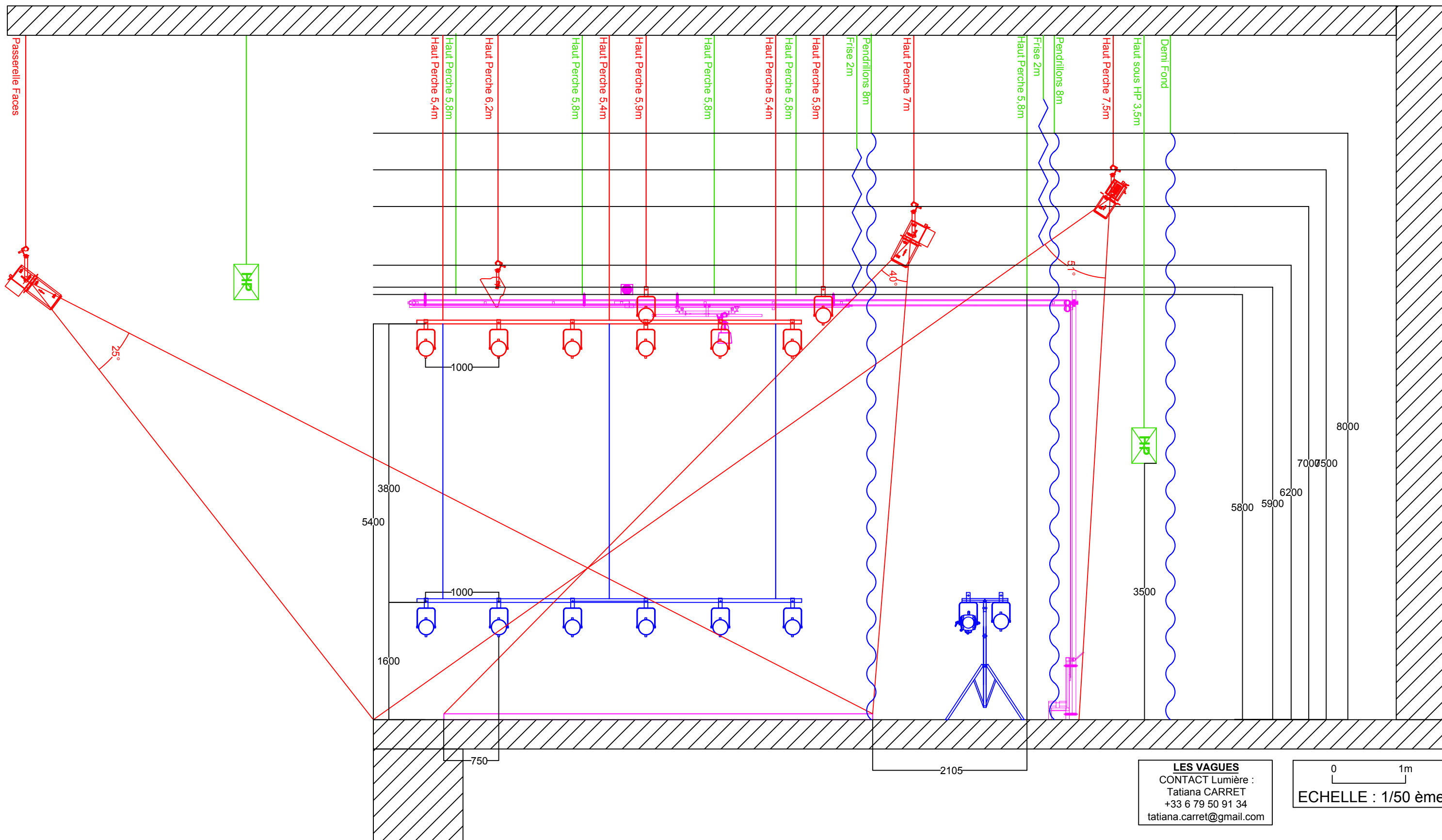
production@lentrouvert.com

Lola GORET
Production & logistic

+33 (0)6 83 73 57 73

contact@lentrouvert.com





Tonne
d'eau



Sous perche 5,4m
Distance du mitar : 7,2m

LES VAGUES
CONTACT Lumière :
Tatiana CARRET
+33 6 79 50 91 34
tatiana.carret@gmail.com